

A New Community Space for Watts, Los Angeles

At 95,000 sf, Watts community space is centered on community, learning, wellness and culture which includes a Learning and Opportunity Center with classrooms, mentorship programs, maker spaces, co-working spaces and a small business incubator; a Cultural Center with a recording, art and performance studios; a Wellness Center for fitness and training with a dance/yoga studio, pool, sports courts and track; and a Community Center with youth programs, daycare, parental support and elder services. A series of contemplative gardens, shaded spaces, and outdoor rooms connect to the interior via large openings, expanding usable space and making it flexible for a myriad of uses—from high capacity performance spaces to intimate, restorative spaces for healing.

Beyond the building, 6 acres of open landscape and hardscape gathering spaces include an amphitheater, family areas with picnic tables, playgrounds and splash pads, various recreation areas with sports courts, and a flexible meadow for pick-up games, group play and community/family gatherings.

Proposals should consider furnishings and potential shade structures that are reconfigurable for various outdoor scenarios within the open Meadow area of the Watts site.





Axonometric view



Perspective view of the Meadow

Echo Street West, Atlanta

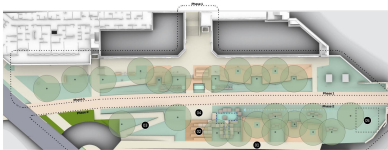
This 18-acre mixed-use residential and commercial center in West Midtown, Atlanta, envisions a new Westside mixed-use district that is inspired by the industrial fabric along the former Kudzu Line that ran through the site, while employing a combination of building scale and programmatic mix to contextualize the existing urban nature of the different adjacent communities. The rich history of industrial development and railway impact on the site is a foundation for creating a unique place that builds on new city-wide interventions such as the Beltline extension, the West Midtown revitalization, and the Georgia Tech expansion, creating a plan that is natural, respectful, and inventive in its site response.

For the Echo Street West site, proposals should envision a collection of pieces that would serve to support the Forest Valley's retail and food & beverage programs.



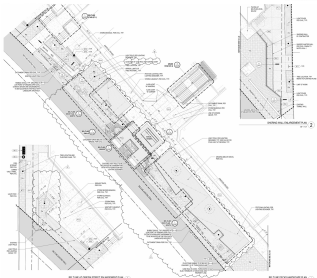


Perspective views of Forest Valley



Site plan, Forest Valley

- 1 Retaining Wall (per OUV)
- 2 Grange (per OUV)
- 3 Retainment Wall (per OUV)
- 4 Retainment Wall (per OUV)
- 5 Retainment Wall (per OUV)
- 6 Retainment Wall (per OUV)
- 7 Retainment Wall (per OUV)
- 8 Retainment Wall (per OUV)
- 9 Retainment Wall (per OUV)
- 10 Retainment Wall (per OUV)
- 11 Retainment Wall (per OUV)
- 12 Retainment Wall (per OUV)
- 13 Retainment Wall (per OUV)
- 14 Retainment Wall (per OUV)
- 15 Retainment Wall (per OUV)
- 16 Retainment Wall (per OUV)
- 17 Retainment Wall (per OUV)
- 18 Retainment Wall (per OUV)
- 19 Retainment Wall (per OUV)
- 20 Retainment Wall (per OUV)
- 21 Retainment Wall (per OUV)
- 22 Retainment Wall (per OUV)
- 23 Retainment Wall (per OUV)
- 24 Retainment Wall (per OUV)
- 25 Retainment Wall (per OUV)
- 26 Retainment Wall (per OUV)
- 27 Retainment Wall (per OUV)
- 28 Retainment Wall (per OUV)
- 29 Retainment Wall (per OUV)
- 30 Retainment Wall (per OUV)
- 31 Retainment Wall (per OUV)
- 32 Retainment Wall (per OUV)
- 33 Retainment Wall (per OUV)
- 34 Retainment Wall (per OUV)
- 35 Retainment Wall (per OUV)
- 36 Retainment Wall (per OUV)
- 37 Retainment Wall (per OUV)
- 38 Retainment Wall (per OUV)
- 39 Retainment Wall (per OUV)
- 40 Retainment Wall (per OUV)
- 41 Retainment Wall (per OUV)
- 42 Retainment Wall (per OUV)
- 43 Retainment Wall (per OUV)
- 44 Retainment Wall (per OUV)
- 45 Retainment Wall (per OUV)
- 46 Retainment Wall (per OUV)
- 47 Retainment Wall (per OUV)
- 48 Retainment Wall (per OUV)
- 49 Retainment Wall (per OUV)
- 50 Retainment Wall (per OUV)
- 51 Retainment Wall (per OUV)
- 52 Retainment Wall (per OUV)
- 53 Retainment Wall (per OUV)
- 54 Retainment Wall (per OUV)
- 55 Retainment Wall (per OUV)
- 56 Retainment Wall (per OUV)
- 57 Retainment Wall (per OUV)
- 58 Retainment Wall (per OUV)
- 59 Retainment Wall (per OUV)
- 60 Retainment Wall (per OUV)
- 61 Retainment Wall (per OUV)
- 62 Retainment Wall (per OUV)
- 63 Retainment Wall (per OUV)
- 64 Retainment Wall (per OUV)
- 65 Retainment Wall (per OUV)
- 66 Retainment Wall (per OUV)
- 67 Retainment Wall (per OUV)
- 68 Retainment Wall (per OUV)
- 69 Retainment Wall (per OUV)
- 70 Retainment Wall (per OUV)
- 71 Retainment Wall (per OUV)
- 72 Retainment Wall (per OUV)
- 73 Retainment Wall (per OUV)
- 74 Retainment Wall (per OUV)
- 75 Retainment Wall (per OUV)
- 76 Retainment Wall (per OUV)
- 77 Retainment Wall (per OUV)
- 78 Retainment Wall (per OUV)
- 79 Retainment Wall (per OUV)
- 80 Retainment Wall (per OUV)
- 81 Retainment Wall (per OUV)
- 82 Retainment Wall (per OUV)
- 83 Retainment Wall (per OUV)
- 84 Retainment Wall (per OUV)
- 85 Retainment Wall (per OUV)
- 86 Retainment Wall (per OUV)
- 87 Retainment Wall (per OUV)
- 88 Retainment Wall (per OUV)
- 89 Retainment Wall (per OUV)
- 90 Retainment Wall (per OUV)
- 91 Retainment Wall (per OUV)
- 92 Retainment Wall (per OUV)
- 93 Retainment Wall (per OUV)
- 94 Retainment Wall (per OUV)
- 95 Retainment Wall (per OUV)
- 96 Retainment Wall (per OUV)
- 97 Retainment Wall (per OUV)
- 98 Retainment Wall (per OUV)
- 99 Retainment Wall (per OUV)
- 100 Retainment Wall (per OUV)



Enlarged plans



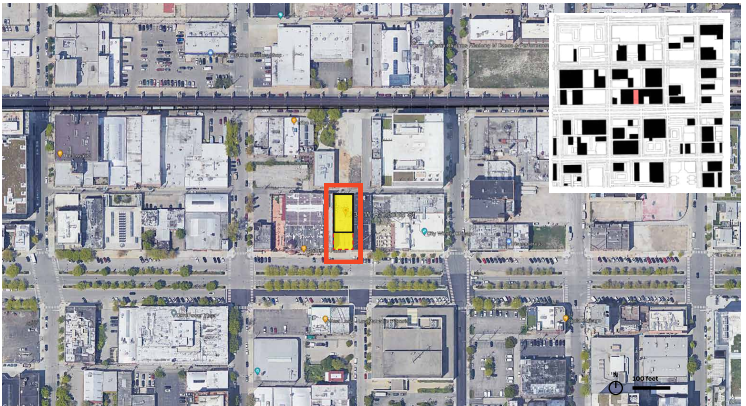
Urban Infill, Chicago

This urban infill site on the West side of Chicago is in the Fulton Market District, once a booming industrial neighborhood that has transitioned to become a vibrant commercial center replete with the hottest retail, restaurants, coffee shops and bars that activate the region at pedestrian scale. Randolph Street, where the site is located, is one of the primary East-West streets of the District.

In keeping with the neighborhood's development forecast, program for the build-out at 1230 Randolph is projected to be an intimate 1200sf coffee and pastry shop that takes advantage of the generous forecourt and setback at the street for a 3-season pick-up window with day-to-day outdoor seating and social space, reconfigurable for occasional book readings and talks.

Proposals should consider furnishings and potential shade structures / canopies for weather protection that support casual coffee and food service, emphasizing social gathering responsive to various outdoor scenarios that take advantage of the infill condition and pedestrian activation.

Site plan



1230 W Randolph St, Chicago, IL 60607

Chicago Site - Urban Infill Condition



Site: View from Front



View looking North, East, and West

Chicago Site - Urban Infill Condition